



Smithsonian

# Finding the Right Container



Anne Montgomery

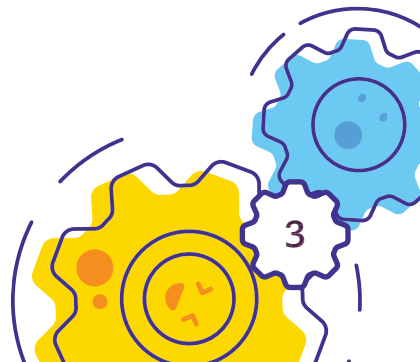


buttons

FOR RE



Where should you  
put them?

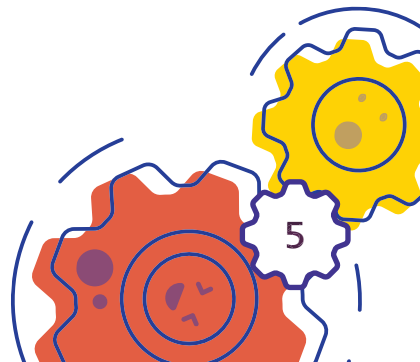




shoes



Where should you  
put them?





tools



Where should you  
put them?





# STEAM CHALLENGE

## The Problem

Your teacher has too many paper clips.  
They need a container.

## The Goals

- Your container should hold 25 paper clips.
- It should be made of plastic building blocks.
- It should be easy to grab the paper clips.







## 1 Research and Brainstorm

Learn about containers.



## 2 Design and Build

Draw your plan. Build your container!



## 3 Test and Improve

Place the paper clips in your container. Then, try to make it better.



## 4 Reflect and Share

What did you learn?

